



LËNSTER LYCÉE  
INTERNATIONAL SCHOOL



**PRIMARY SCHOOL OFFER**

## Nursery school (Kindergarten)

Early Education at Lënster Lycee International School (LLIS) is following the pedagogical concept of European schools, which shall actively and consciously influence and stimulate children to develop an understanding of the values in the European School system. The underlying values are human rights, equality, democracy, environmental sustainability, multiculturalism and respect for the mother tongue. Early Education promotes responsibility, a sense of community and respect for the rights and freedom of the individual.

## Primary School

The primary cycle at Lënster Lycee International School (LLIS) is also following the pedagogical concept of European schools. One of the main aims of primary school is to guarantee the quality of education and teaching and to help each student to develop their full potential.

Following the concept of life long learning, pupils are equipped with the skills, knowledge and understanding necessary to prepare them for their future as productive members of 21st century society.



Cycle	Classes	Age
Nursery school (Kindergarten)	M1 - M2	4 and 5
Primary	P1 - P5	6 - 10
Secondary		
Observation cycle	S1 - S3	11 - 13
Pre-orientation cycle	S4 - S5	14 - 15
Orientation cycle	S6 - S7	16 - 18

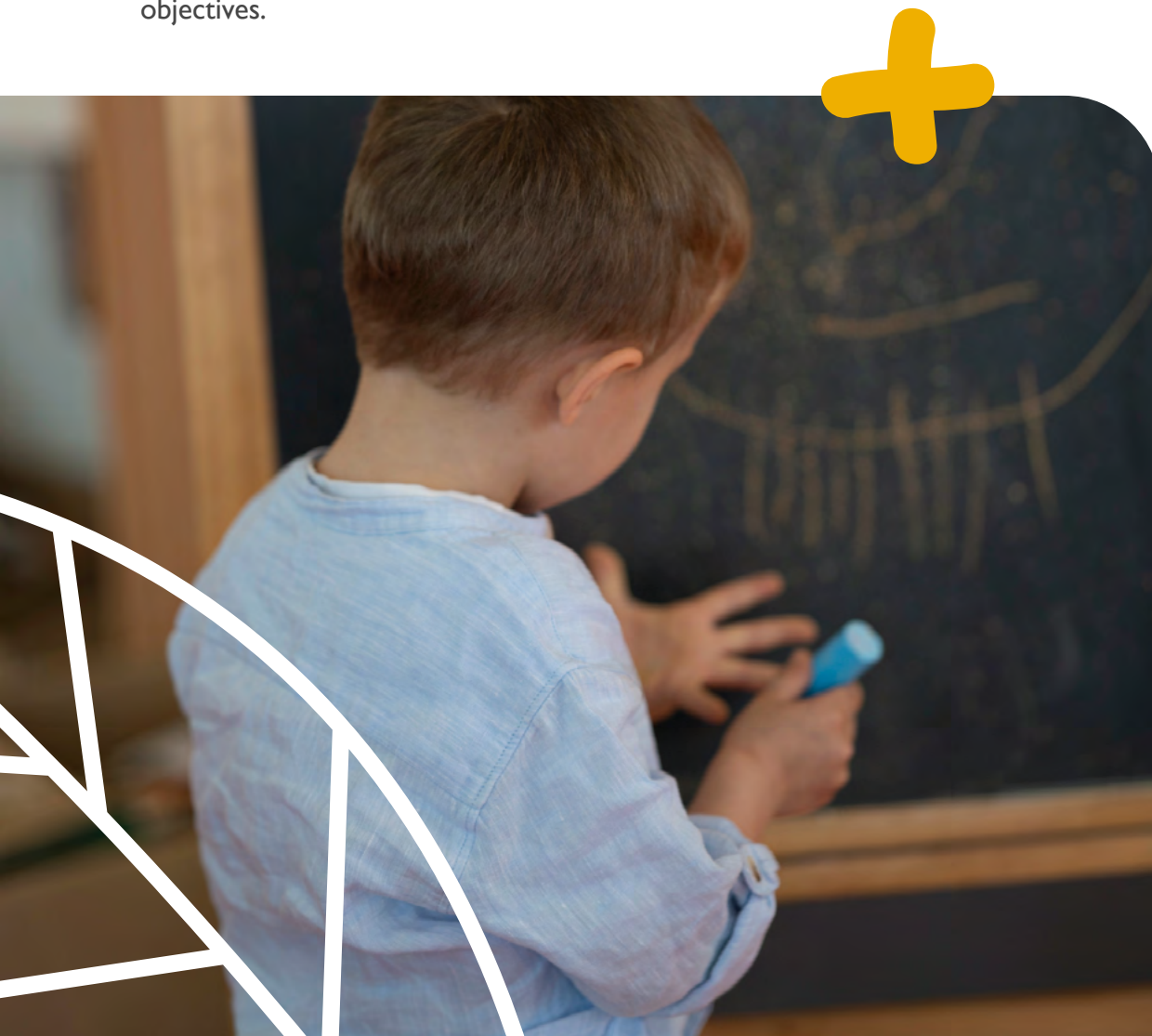
## Nursery School (Kindergarten)

“Early Education” is the generic term used to denote the first two years of teaching and education in a school setting. The child should acquire, not only knowledge and skills, but also good working habits so that they will serve as tools for lifelong learning. The key aim is to support children’s growth into ethical and responsible members of society. Teaching and learning in the early years aims to support and guide children in their physical, social, cognitive and emotional development and to prevent future difficulties by offering them the best possible conditions for learning.

Early Education is designed to:

- prepare children for a happy, healthy, responsible development
- support children’s learning potential
- develop respect for others and the environment;
- teach children to respect and appreciate children’s own cultural and social identity, its values and those of others
- promote a European spirit.

Early Education consists of four areas: „Me and my body“, „Me as a person“, „Me and others“ and „Me and the world“. Each area includes three dimensions: Learning to be, Learning to live with others and Learning to do and to know based on learning objectives.



## Primary

Primary School lasts five years (P1-P5) and the programme focuses on the development of the whole child. As a consequence, school offers a framework that meets children's spiritual, academic, social, physical, emotional and cultural needs and provides a multilingual and multicultural education.

### It is the objective to:

- develop high standards in both mother tongue and foreign languages, mathematical and scientific skills throughout the whole period of schooling;
- encourage a European and global perspective overall and particularly in the study of the human sciences;
- encourage creativity in music and the plastic arts and an appreciation of all that is best in a common European artistic heritage;
- develop physical skills and instil in pupils an appreciation of the need for healthy living through participation in sporting and recreational activities;
- foster tolerance, co-operation, communication and concern for others throughout the school community and beyond;
- cultivate pupils' personal, social and academic development and to prepare them for the next stage of education.



The objectives are implemented in the harmonised curriculum:

Subject	P1 & P2	P3 to P5
Mother tongue (Language 1)	8h	6h45
Language 2	2h30	3h45
Mathematics	4h	5h15
Music	5h	3h
Art	5h	3h
Physical education/Swimming	5h	3h
Discovery of the world	1h30	3h
European hours	-	1h30
Life and society	1h	1h30
Luxembourgish	2h	2h



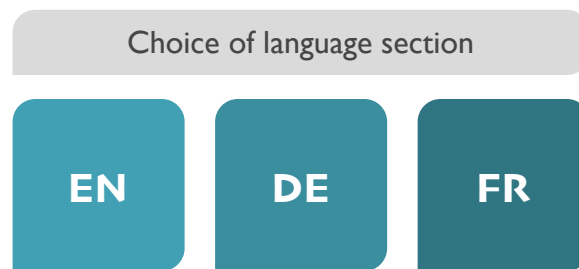
## Language sections & language teaching

The European Schools allow pupils to follow a personalized linguistic path. Basic education is provided in one of the official languages of the European Union. This principle makes it possible to preserve the primacy of the pupils' mother tongue or dominant language.

Pupils enroll in a specific language section. Currently the school offers three language sections: English, French and German. Primary education is delivered in one of these three languages (*the pupil's mother tongue or dominant language - called Language 1*).

In the first year of kindergarten, education is taught in the mother tongue or dominant language of a child, which is an important principle of a European school.

With the exception of the mother tongue syllabus, the distribution of courses and their content are harmonized in each section.

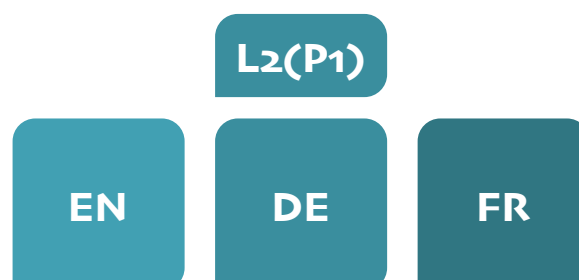


## Choice of a second foreign languages

In the first year of primary school, pupils choose a first foreign language (*called Language 2*) - German, English or French.

The study of this Language 2 continues until the Baccalaureate and some subjects are taught in Language 2 at secondary level.

All pupils must learn a second foreign language (*called Language 3*) from the first year of secondary school.





### Get in touch

[www.primary.llis.lu/staff](http://www.primary.llis.lu/staff)

### FAQ

[www.primary.llis.lu/faq](http://www.primary.llis.lu/faq)

### Leave a message

[secretariat.primary@llis.lu](mailto:secretariat.primary@llis.lu)

### Give a call

Tél.: 27 69 63 - 410



LËNSTER LYCÉE  
INTERNATIONAL SCHOOL



2 rue Victor Ferrant  
L-6122 Junglinster  
27 69 63 - 1  
[www.lis.lu](http://www.lis.lu)